

HOST AN EVENT AT ...

THE CORNER



WHITMAN-WALKER

1701 14th Street NW Washington, DC
www.thecorneratww.org

About Us

Since our founding in 1973, we have worked toward building a society where all persons are seen for who they are, treated with dignity and respect, and afforded equal opportunity to health and wellbeing.

During the AIDS epidemic, when most doctors, hospitals and clinics were turning people away, we opened our doors to those who were desperately in need of care and support. Our space became a safe haven, and our volunteers and staff became a family to the many young men who were sick, scared and had no place else to go.

Today, we remain a safe space where people can be who they are and love who they want without fear of judgement or retribution.

HOST AN
EVENT AT

THE
CORNER
WHITMAN-WALKER

The Corner

The Corner at Whitman-Walker is an exciting community gathering and events space in Washington, DC at LIZ. LIZ was formally the Elizabeth Taylor Medical Center and was one of the early homes of Whitman-Walker Clinic. Originally, The Corner was the entrance and lobby of the clinic which served LGBTQ and HIV positive community members who needed a place to receive

stigma-free care and treatment while in some cases facing their own deaths due to the AIDS epidemic. Transformed by architect Annabelle Selldorf and rechristened by Whitman-Walker, the former clinic lobby now serves as a vital location for diverse cultures and communities to celebrate, congregate and gather.

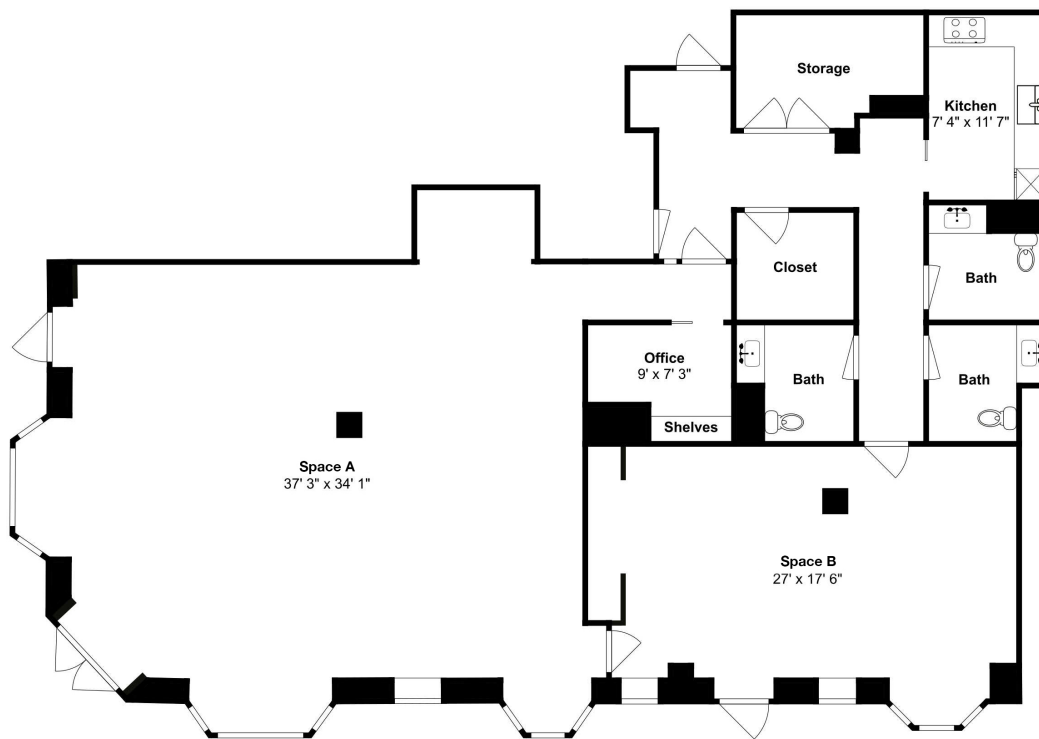


HOST AN
EVENT AT

**THE
CORNER**
WHITMAN-WALKER

Capacity Information

	STANDING RECEPTION	SEATED DINNER	THEATER STYLE	CLASSROOM STYLE
Space A	125	50	72	45
Space B	30	18	29	15



CONTACT

The Corner
1701 14th Street NW
Washington, DC 20006
TheCorner@reidrodell.com
www.thecorneratww.org
202-469-3464

HOST AN
EVENT AT

**THE
CORNER**
WHITMAN-WALKER

Venue Rental Fee

Total Square Footage: 2,735

Venue Rental Fees for **Space A**

Capacity 125 guest Standing Reception for 4 Hours

	CORPORATE	NONPROFIT*
Monday - Wednesday Rental Rate	\$3,600	\$3,000
Thursday & Sunday Rental Rate	\$4,800	\$3,840
Friday - Saturday Rental Rate	\$5,500	\$4,400

*501(c)(3)s receive a 20% discount on rental fees

**This rate is for a 4 hour rental period.

HOURLY RATE

Monday - Wednesday: \$400 per hour
Thursday & Sunday: \$600 per hour
Friday - Saturday: \$800 per hour

EVENT CANCELLATION

Days Prior to Event Date	Forfeiture %
over 61 days	30%
31 - 60 days	40%
8 - 30 days	60%
0 - 7 days	100%

IMPORTANT NOTE

These rates include whatever set up and breakdown/clean-up time needed. We recommend you add at least two hours for setup and 1 hour for breakdown.

MANDATORY CLEANING FEE

\$450

CONTACT

The Corner
1701 14th Street NW
Washington, DC 20006
TheCorner@reidrodell.com
www.thecorneratww.org
202-469-3464

HOST AN
EVENT AT

**THE
CORNER**
WHITMAN-WALKER

Venue Rental Fee

Total Square Footage: 2,735

Venue Rental Fees for **Space B**

Capacity 30 Standing Reception for 4 Hours

	CORPORATE	NONPROFIT*
Monday - Wednesday Rental Rate	\$1,200	\$960
Thursday & Sunday Rental Rate	\$1,400	\$1,120
Friday - Saturday Rental Rate	\$1,800	\$1,120

*501(c)(3)s receive a 20% discount on rental fees

HOURLY RATE

Monday - Wednesday: \$100 per hour
Thursday & Sunday: \$200 per hour
Friday - Saturday: \$300 per hour

EVENT CANCELLATION

Days Prior to Event Date	Forfeiture %
over 61 days	30%
31 - 60 days	40%
8 - 30 days	60%
0 - 7 days	100%

MANDATORY CLEANING FEE

\$200

CONTACT

The Corner
1701 14th Street NW
Washington, DC 20006
TheCorner@reidrodell.com
www.thecorneratww.org
202-469-3464

HOST AN
EVENT AT

**THE
CORNER**
WHITMAN-WALKER

Preferred Vendor List

CATERING

Bluestone Lane Catering - West End

<https://bluestonelane.getbento.com/catering-store-v2/>
support@bluestone-lane.zendesk.com

Occasions

www.occasionscaterers.com
Joel Wolfe
jwolke@occasionscaterers.com
202.454.7824

Revive Catering

www.revive-dc.com
Charese John
catering@revive-dc.com
202-667-1212

Spilled Milk

www.spilledmilkcatering.com
Heather Ellis
heather@spilledmilkcatering.com
202-525-6455

To Your Taste

www.toyourtastecatering.com
Diego Delgado
Diego.Delgado@toyourtastecatering.com
703-539-8646

MIXOLOGIST

Jane Jane DC

www.janejanedc.com
JP Sabatier
hello@janejanedc.com
202-481-2166

STAFFING

Leader's Staffing Service

Federico Barahona
309joseb@verizon.net
703-906-6383

FLOWERS & DÉCOR

Flowers on 14th

www.flowersonfourteenth.com
Jeffrey Fritz
flowersonfourteenth@hotmail.com
(202) 265-4965

Lee's Flowers

www.leesflowerandcard.com
Stacie Banks
Sbanks@leesflowerandcard.com
(202) 265-4965

Balloons and Decor

www.balloonsanddecor.com
Pattie Kim
pattie@balloonsanddecor.com
301-537-5730

RENTALS

Hello Rentals

www.hello-rentals.com/
customerservice@hello-rentals.com
202-543-0100

Perfect Settings

www.perfectsettings.com/
PSSales@perfectsettings.com
202-722-2900

Table Manners

www.tablemannersdc.com
Jessica Hernandez
info@tablemannersdc.com
301-277-0582

AUDIO VISUAL/LIGHTING

Breasia

www.breasiaproductions.com
Jamal Lee
jamal@breasiaproductions.com
(301) 490-3155

DJ Divine

djdivinedc@gmail.com
(703) 407-6830

Pike Productions

www.pikeproductionsdc.com
Kathleen Kelley
kathleen@pikeproductionsdc.com
(301) 831-9500

VALET SERVICES

MJ Valet Services

<https://www.mjvalet.com/>
Mike Jasser
mjasser@mjvalet.com
202-587-2745

SECURITY

Quill and Feathers

www.quillandfeathers.com
Ainsley Grant
quillandfeathers@gmail.com
202-469-1897

HOST AN
EVENT AT

THE
CORNER
WHITMAN-WALKER